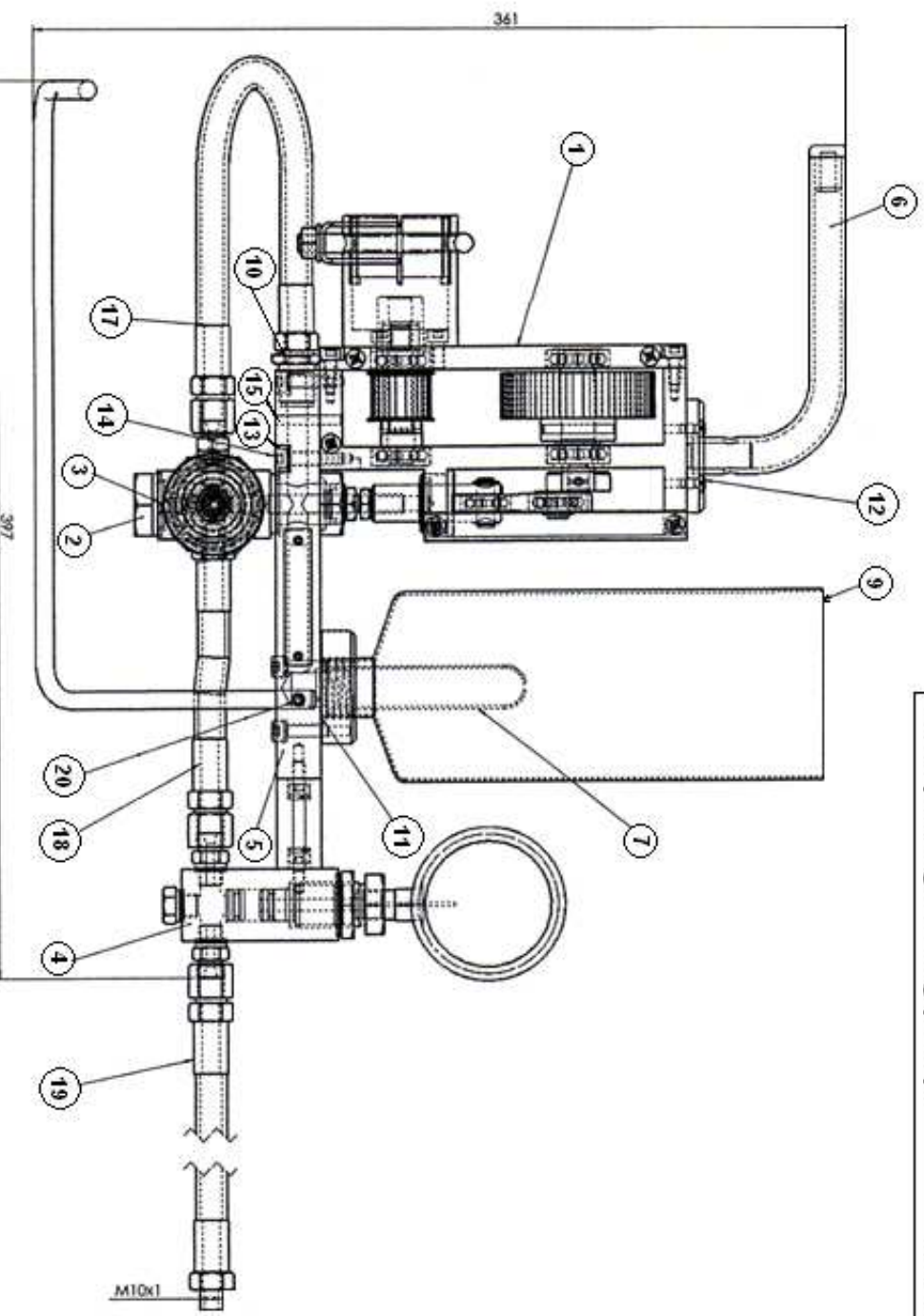
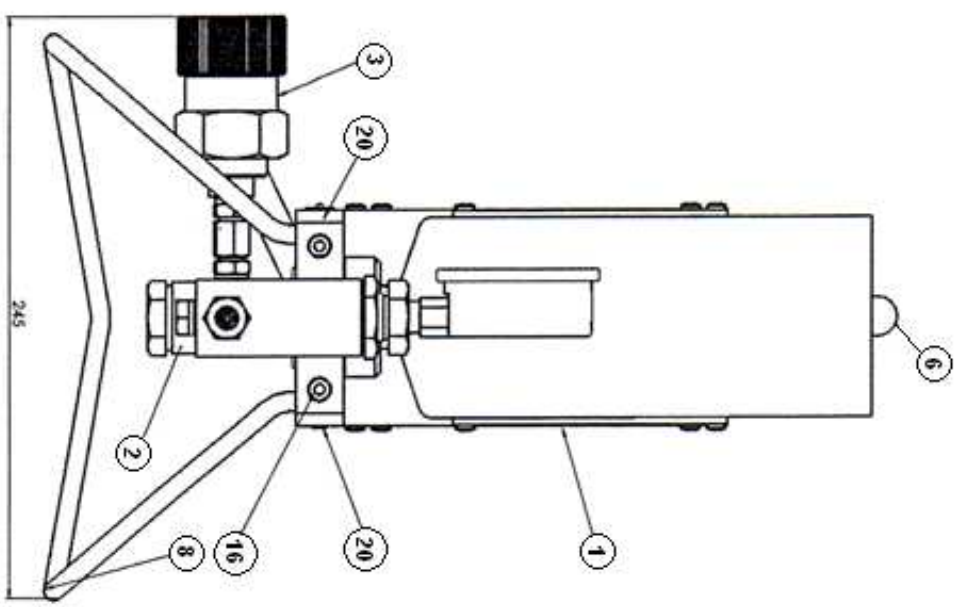
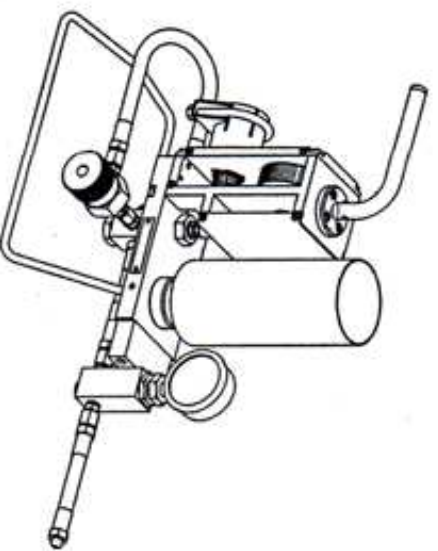


Complete grouting pump Pic. 1

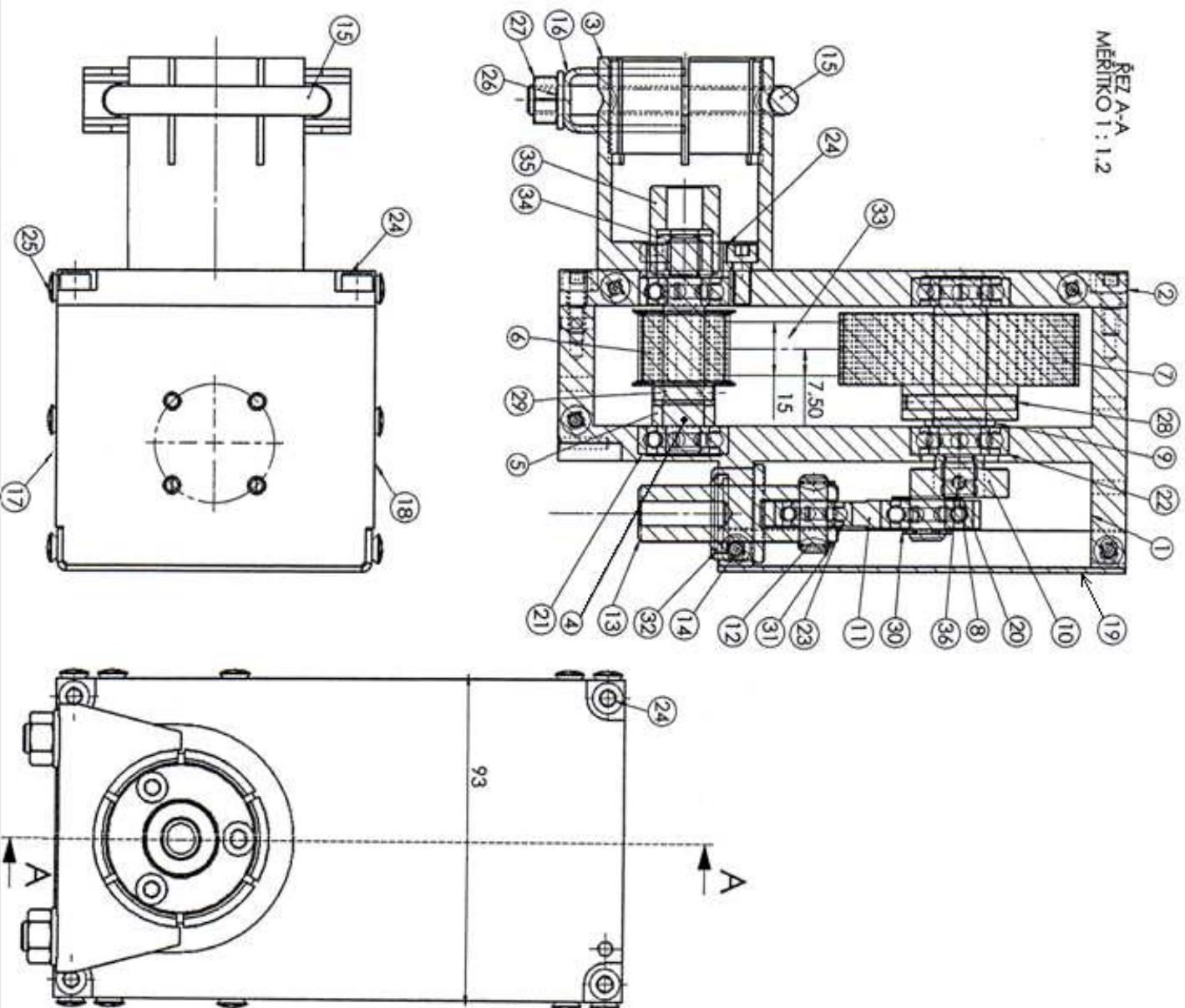


Pos.	Name of product	Order no.	Pcs
1	Complete drive - pic. 2	V100	1
2	Complete pump barrel - pic. 3	V200-12	1
3	Complete regulating valve - pic. 4	V300-02	1
4	Complete manifold valve - pic. 5	V400	1
5	Complete board - pic. 6	V000	1
6	Complete banister	V105	1
7	Screen	N500	1
8	Stand	V012	1
9	Plastic bottle	N018	1
10	Seal CU 10x14x1,5	N020	2

Pos.	Name of product	Order no.	Pcs
11	Leather seal under PET-bottle	N007	1
12	Screw M4x10	N137	4
13	Washer 5	N032	6
14	Screw M5x25	N014	4
15	Spring pin 4x30	N021	2
16	Screw M5x40	N015	2
17	armoured hose no. 1 = 350 mm	N010b	1
18	armoured hose no. 2 = 142 mm	N011b	1
19	armoured hose ad catalogue	N030	1
20	Screw M6x8 of stand	N030	2

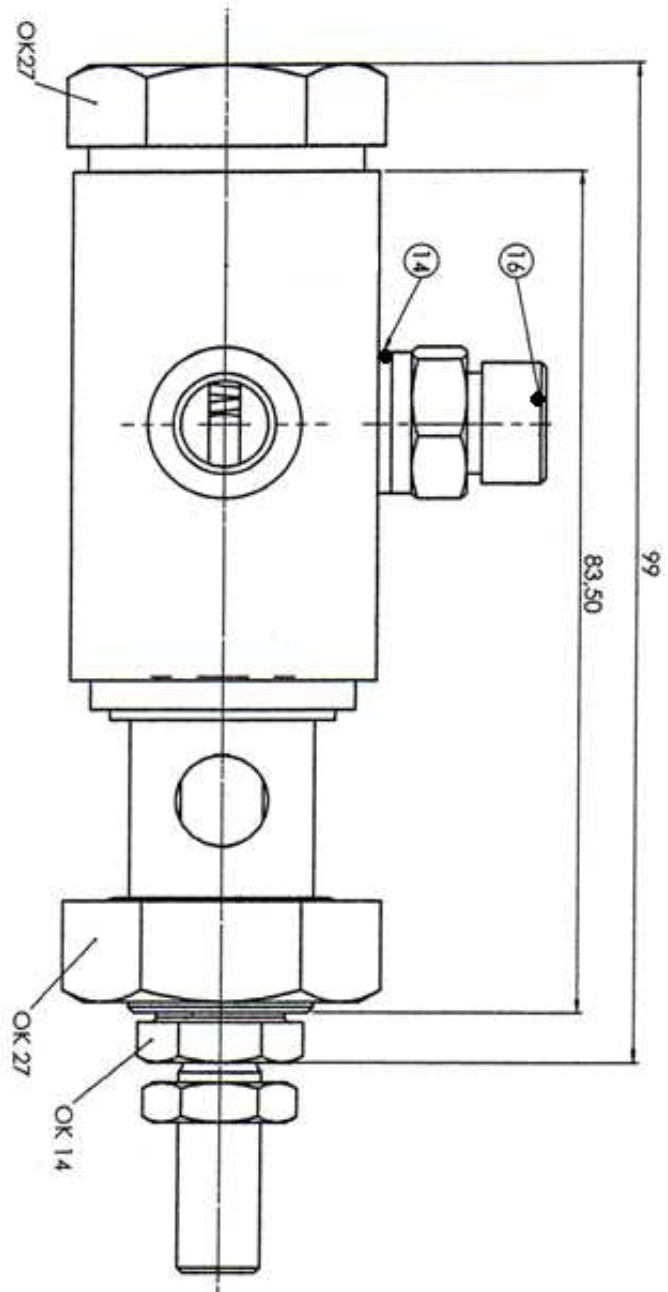


REZ A-A  
MÉRITKO 1 : 1.2

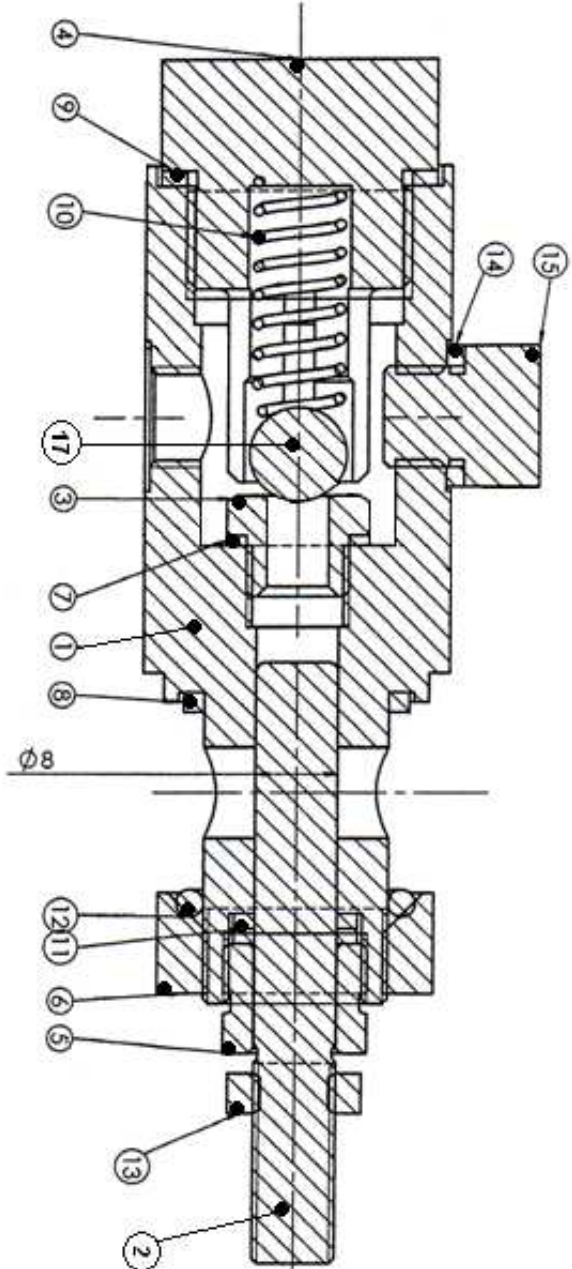
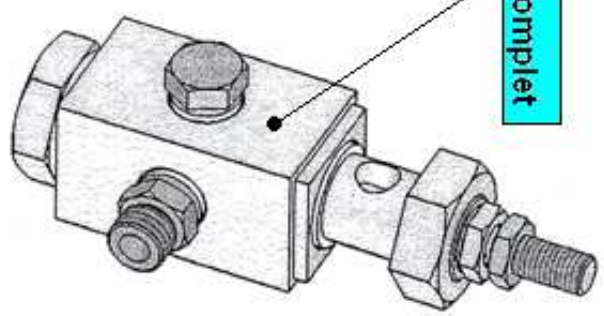


Pos.	Name of product	Order-no.	Pcs
1	Box	V101	1
2	Box cover	V102	1
3	Clamping bush	V103-13	1
4	Drive shift	V110	1
5	Distance bush 2 (of drive shift)	V122	1
6	Gear whell z=28	N107	1
7	Gear whell z=72	N108	1
8	Driven shift	V111	1
9	Distance bush 1 (of driven shift)	V121	1
10	Crank	V112	1
11	Connecting rod	V113	1
12	Peg	V114	1
13	Piston rod	V116	1
14	Guide bush	V115	1
15	Fastening catch clamp	V117	1
16	Jaw	V118	1
17	Cover 1	V119	1
18	Cover 2	V119	1
19	Cover 3	V120	1
20	Distance ring under crank	V123	1
21	Bearing 6000ZZ	N130	3
22	Bearing 6001ZZ	N131	2
23	Bearing 608ZZ	N132	1
24	Screw M5x12	N136	7
25	Screw M4x10	N137	10
26	Washer 8	N153	2
27	Nut M8	N135	2
28	Spring pin 4x32	N128	1
29	Spring pin 4x18	N127	1
30	Retaining ring 7	N134	1
31	Retaining ring 6	N133	2
32	Scraper ring PUR	N141	1
33	Cogged belt 104z	N138	1
34	Catch driver hexagon (for drill Narex)	V106-50	0
34	Catch driver hexagon (for drill GÜDE, Einhell)	V106-55	1
35	Socket head on drill machine	V106-60	1
36	Set-screw M4x6	N314	1





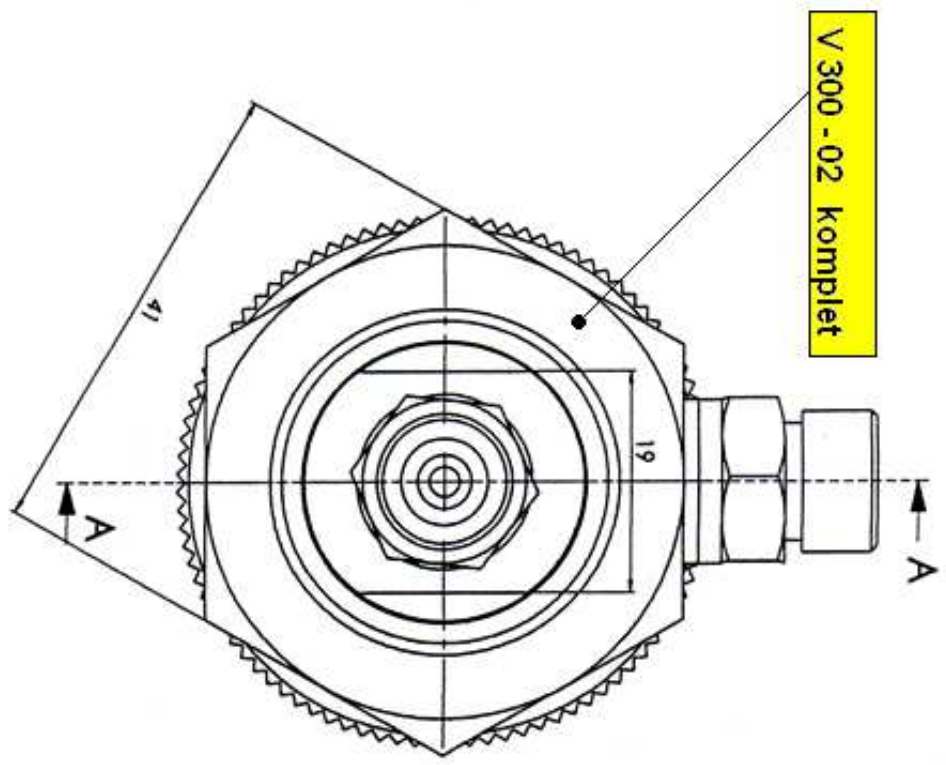
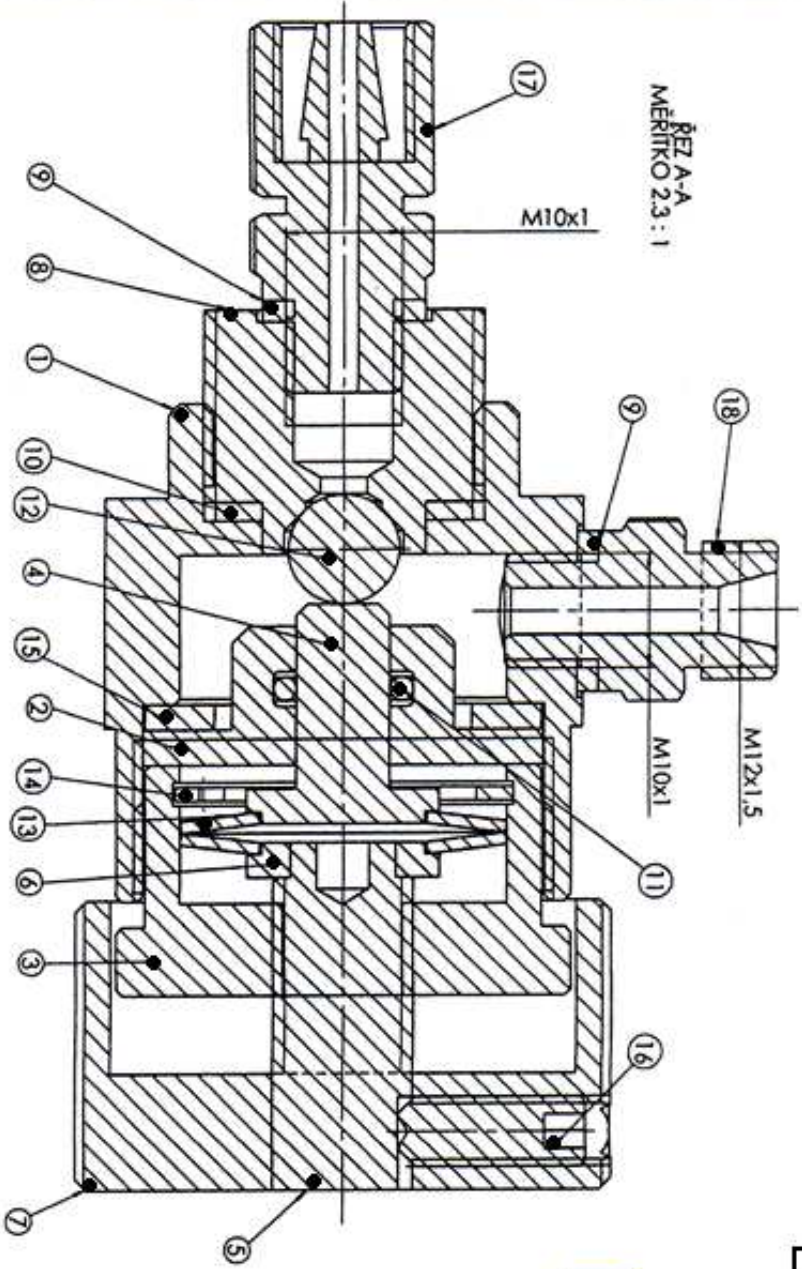
V200-12 komplet



Pos.	Name of product	Order no.	Pcs
1	Pump barrel	V201-12	1
2	Piston	V202	1
3	Seating of ball	V207-12	1
4	Sealing screw (plug of pump barrel)	V204-12	1
5	Sealing screw of piston	V203	1
6	Nut of pump barrel	V205-12	1
7	Seal CU 14x10x1,5	N020	1
8	Seal CU 18x22x2	N215	1
9	Seal CU 22x27x1,5	N220	1
10	Pressure spring 0,9x8x32	N212	1
11	Leather locking ring 8x12x3	N210	1
12	O-ring 2,65x18	N218	1
13	Nut M8x1 to piston	N019	1
14	Seal CU 14x10x1,5	N020	2
15	Plug M10x1	N214	1
16	Inlet branch direct	N411	1
17	Ball 9,525	N211	1

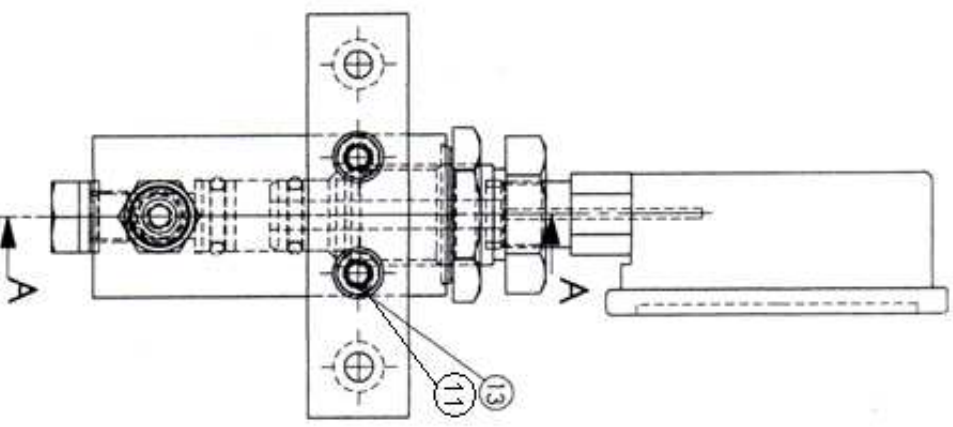
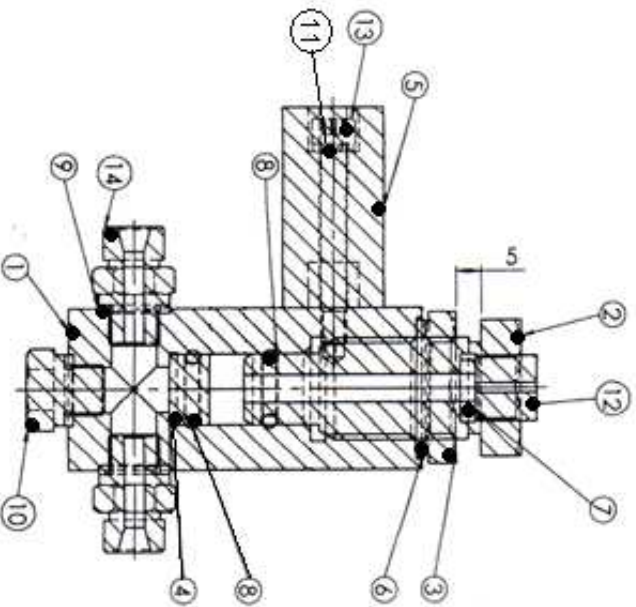
Complete regulating valve

Pic. 4

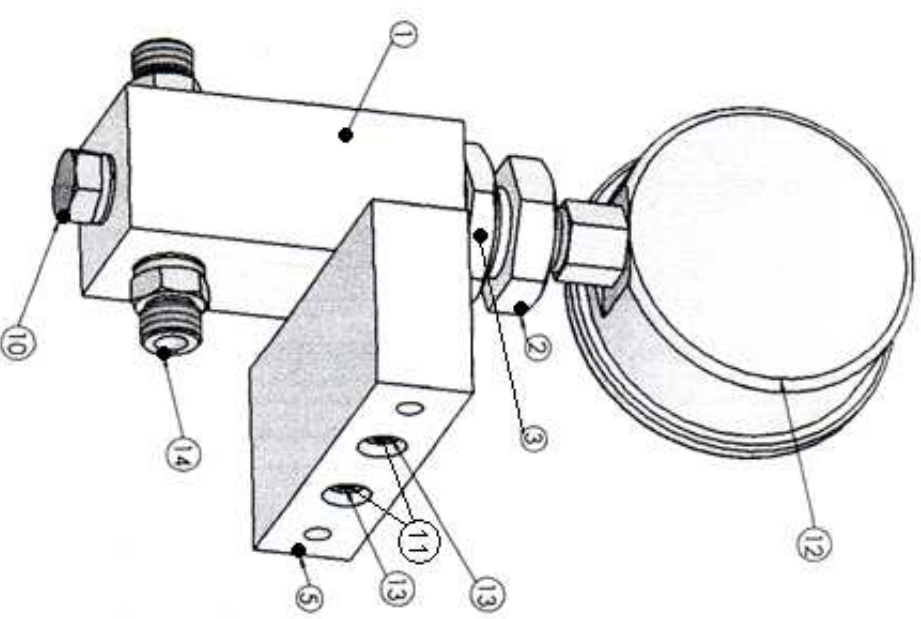


Pos.	Name of product	Order-no.	Pcs
1	Valve casing	V301	1
2	Centering of piston	V306-12	1
3	Valve cover	V307-12	1
4	Valve piston	V308-12	1
5	Screw	V304-12	1
6	Ring	V303-12	1
7	Control hand wheel	V309-12	1
8	Seating of valve	V302	1
9	Seal CU 10 x 14 x 1,5	N020	2
10	Seal CU 14 x 22 x 1,5	N309	1
11	O-ring 7,6 x 2,4	N320	1
12	Ball 10	N211	1
13	Disc spring	N306-02	2
14	Ring	N317-12	1
15	Seal 22 x 34 x 2,2	N321	1
16	Screw M6 x 16	N314-12	1
17	Set-screwing M10x1/M12x1,5	N316	1
18	Inlet branch direct	N411	1



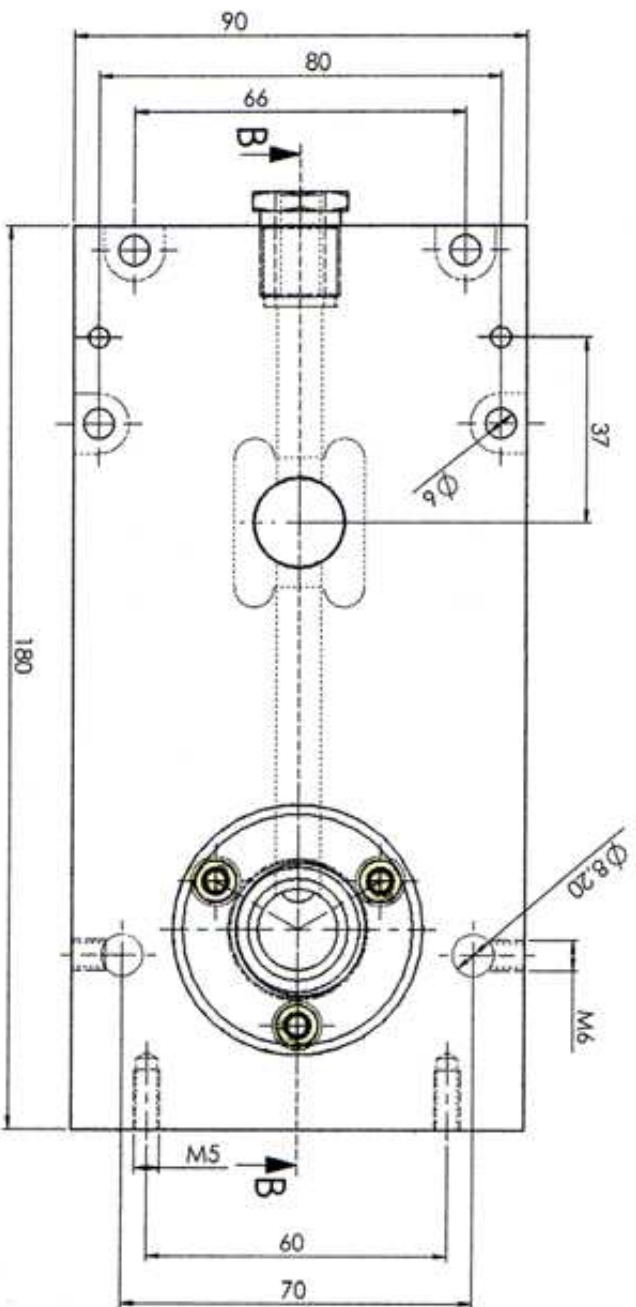
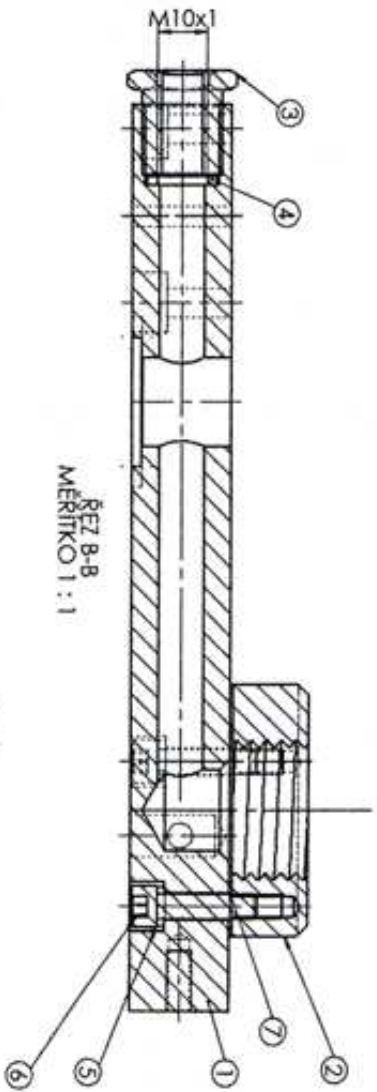


V 400 komplet

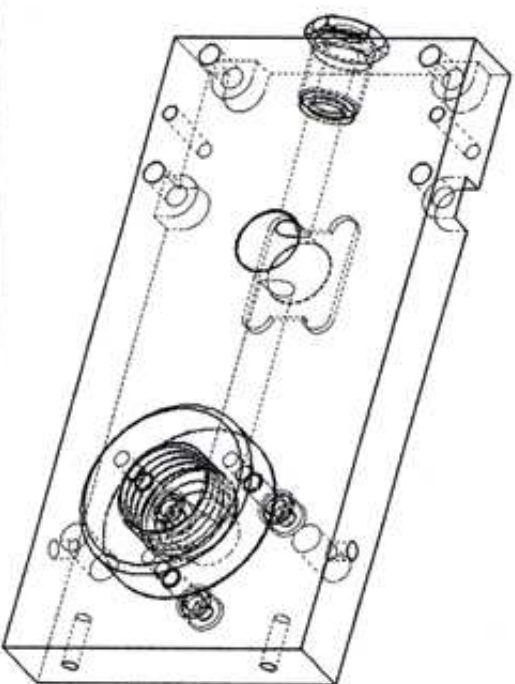


x These parts have to be ordered separately - they are not a part of Complete manifold valve - V 400 komplet

Pos.	Name of product	Order-no.	Pcs
1	Cube	V401	1
2	Manometer reduction	V402	1
3	Nut	V407	1
4	Piston	V406	1
x 5	Prism	V404-01	1
6	Seal CU 27x20x1,5	N415	1
7	Seal CU 9x5x2	N418	1
8	O-ring 10x2,6	N420	2
9	Seal CU 10x14x1,5	N020	3
10	Plug M10x1	N214	1
x 11	Washer 5	N032	2
12	Manometer	N410	1
x 13	Screw M5x40	N015	2
14	Inlet brach XP2-6	N411	2



Pos.	Name of product	Order-no.	Pcs
1	Board	V008	1
2	Inlet branch of funnel	V009	1
3	Reducer	V043	1
4	Seal CU 10x14x1,5	N020	1
5	Washer 5	N032	3
6	Screw M5x20	N017	3



Complete board

Pic. 6